

DATA SHEET

CELL LINE DESIGNATION

ACE2-GFP cell line
(CB-97100-203)

ORIGIN (PARENTAL CELL)

HEK293

GENE INTRODUCED

Genbank Locus ID 59272

RECEPTOR INTRODUCED:

Human angiotensin-converting enzyme 2 (NCBI protein database NP_001358344.1)

USAGE

- SARS and SARS-CoV-2 entry study
- cell based high-throughput screening of human ACE2 antagonists

QUALITY CONTROL

1. This cell line has been tested negative for *Mycoplasma sp.*
2. This cell line has been tested positive for ACE2 antibody staining and GFP signal
3. Surviving rate: More than 2.5 million/vial on the second day after thawing.

CELL CULTURE CONDITION

1. Growth medium: 90% DMEM, 10% FBS and 500 $\mu\text{g/ml}$ G418
2. Freezing medium: 10% DMSO, 90% FBS

DATA EXAMPLE

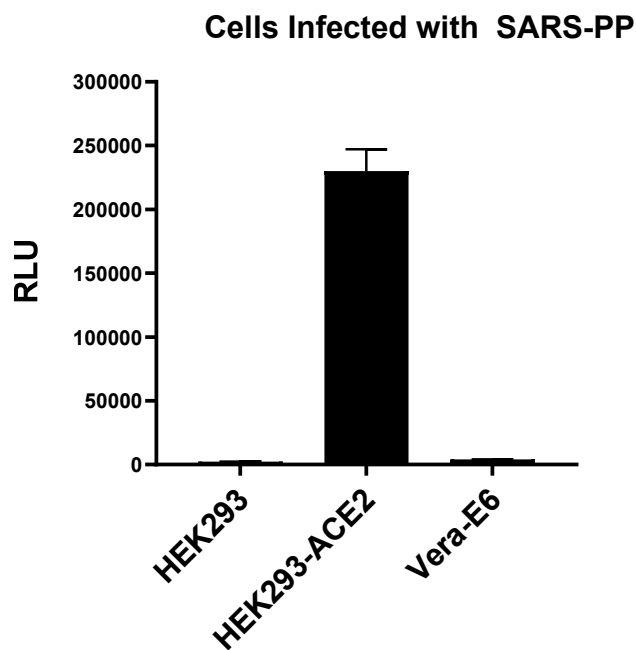


Figure 1. SARS Pseudovirus Particles Infection of different cell lines

20K of HEK293, HEK293-ACE2_GFP and Vero E6 cells were plated to a 96-well white clear plate. On the 2nd day, the cells were infected with 50 μl of SARS Pseudovirus Particles (CB-97100-143) and cultured for additional 42 hrs. The cells were lysed and the firefly luciferase activity was measured with Codex's luciferase assay kit (CB-80552-010)